

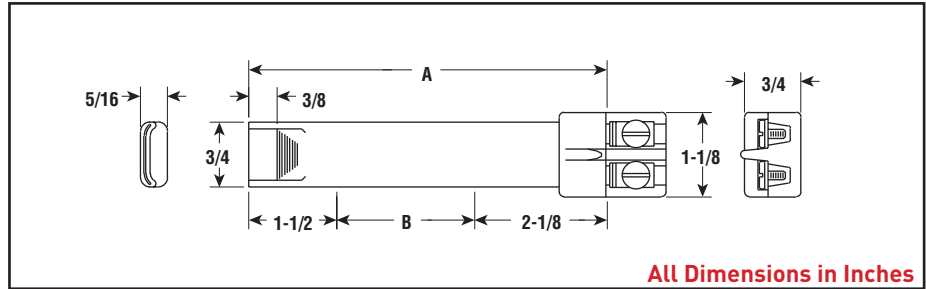


## NS & NSL 3/4" Wide High Temperature

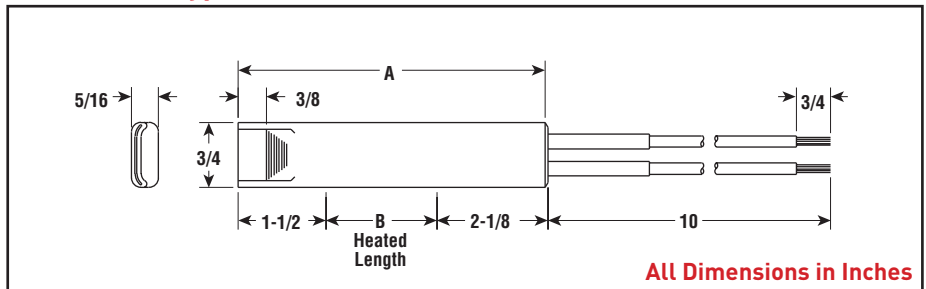


- Terminal Block, One End (type NS)
- Lead Wires, One End (type NSL)
- 12-1/2 - 54" Lengths
- 500 - 3,000 Watts
- 120, 240 and 480 Volt
- One-Piece INCOLOY® Sheath
- 24 - 38 W/In<sup>2</sup>
- 1500°F Max. Sheath Temp.

### Dimensions (type NS)



### Dimensions (type NSL)



### Applications

Strip heaters are used for heat transfer by conduction or convection to heat liquids, air, gases and surfaces. See guidelines in the Strip Heater Overview section.

One-piece strip heaters are supplied without mounting tabs as standard.

### Specifications and Ordering Information

Dimensions (In.)		INCOLOY® Sheath — Terminal Block				INCOLOY® Sheath — Wire Leads								Wt. (Lbs.)				
A	B	Watts	W/In <sup>2</sup>	Model	Stock	PCN	120V	240V	480V	Model	Stock	PCN	120V		240V	480V		
12-1/2	8-7/8	500	32	NS-1205	S	129250	NS	142199	—	—	NSL-1205	NS	165462	NS	165470	—	—	7
13-3/4	10-1/8	500	28	NS-1405	NS	142201	S	129269	—	—	NSL-1405	NS	165489	NS	165497	—	—	7
15-7/16	11-13/16	500	24	NS-1505	NS	142210	NS	142228	—	—	NSL-1505	NS	165550	NS	165518	—	—	7
17-13/16	14-3/16	750	30	NS-1807	NS	142236	NS	142244	—	—	NSL-1807	NS	165526	S	144928	—	—	0.9
18-1/2	14-7/8	1,000	38	NS-1801	NS	142252	NS	142260	—	—	NSL-1801	NS	165534	NS	165542	NS	165876	0.9
19-3/8	15-3/4	1,000	36	NS-1901	NS	142287	S	129277	NS	142295	NSL-1901	NS	165569	NS	165577	NS	165585	1
21-7/16	17-13/16	1,100	35	NS-2001	NS	142308	NS	142316	—	—	NSL-2001	NS	165593	NS	165606	NS	165614	1.1
23-3/4	20-1/8	1,200	34	NS-2401	NS	142332	NS	142340	NS	142359	NSL-2401	NS	165622	S	144936	NS	165630	1.2
25-1/4	21-5/8	1,300	34	NS-2501	NS	142367	NS	142375	NS	142383	NSL-2501	NS	165649	NS	165657	NS	165665	1.3
26-15/16	23-5/16	1,400	34	NS-2601	NS	142391	S	129285	NS	142404	NSL-2601	NS	165673	S	144944	NS	165681	1.3
30-3/16	26-9/16	1,500	32	NS-3015	NS	142412	NS	142420	NS	142439	NSL-3015	NS	165690	NS	165702	NS	165710	1.5
33-15/16	30-5/16	1,500	28	NS-3301	NS	142447	S	142455	NS	142463	NSL-3301	NS	165729	NS	144952	NS	165737	1.7
36-3/8	32-3/4	1,850	32	NS-3601	NS	142471	S	142480	NS	142498	NSL-3601	NS	165745	S	144960	NS	165753	1.9
39	35-3/8	2,000	32	NS-3802	NS	142500	NS	142519	NS	142527	NSL-3802	NS	165761	NS	165770	NS	165788	2
40-3/4	37-1/8	2,100	32	NS-4302	NS	142535	NS	142543	NS	142551	NSL-4302	NS	165796	NS	165809	NS	165817	2.1
51-3/8	47-3/4	2,700	32	NS-4827	NS	142560	S	142578	NS	142586	NSL-4827	NS	165825	NS	165833	NS	165841	2.7
54	50-3/8	3,000	34	NS-5403	NS	—	S	142594	NS	142607	NSL-5403	—	—	NS	165850	NS	165868	2.8

**Stock Status:** S = stock NS = non-stock  
**To Order**—Specify model, PCN, watts, volts and quantity.

**NOTE:** Type NSL leadwires are rated to 250°C. For high temp applications look at porcelain tubing or beads for extra protection. For extremely high temperatures, consider Type NS heaters with high temperature lead wire. See Strip, Ring, and Disc Heaters Design Guide for accessories and options.